

Digestion:

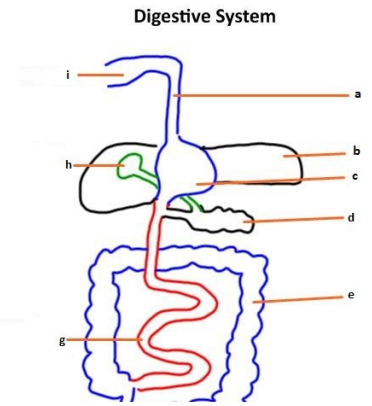
- Contraction of circular and longitudinal muscles causes _____
- The pancreas secretes _____
- Villi increase surface area of _____ and their function is _____
- Membrane transport is required to _____

Hydrolytic enzymes amylase, lipase and an endopeptidase digest these macromolecules

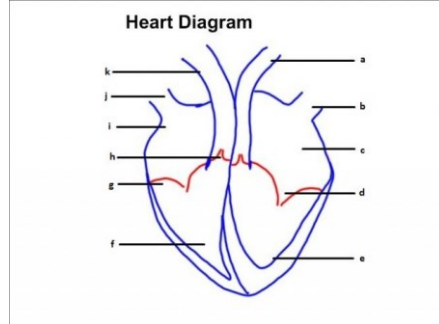
Amylase _____ Lipase _____

Endopeptidase _____

The four layers of tissue in the digestive system are: _____



Can you draw a heart diagram?



William Harvey

- _____
 - _____
- Causes & consequences of occlusion of coronary arteries
- _____
 - _____

Compare the structure and function of arteries and veins

Arteries	Veins

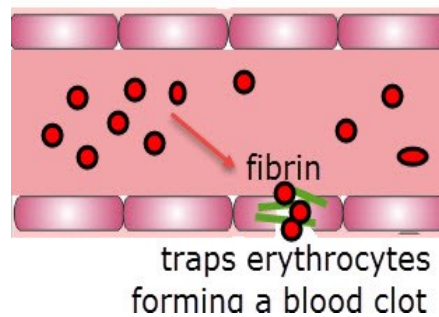
Increasing and decreasing heart rate

- Epinephrine _____
- Nerves from the medulla _____

Explain the role of the SA node

Annotate the diagram

Blood vessel



Steps in the formation of a blood clot: _____, _____, _____, _____

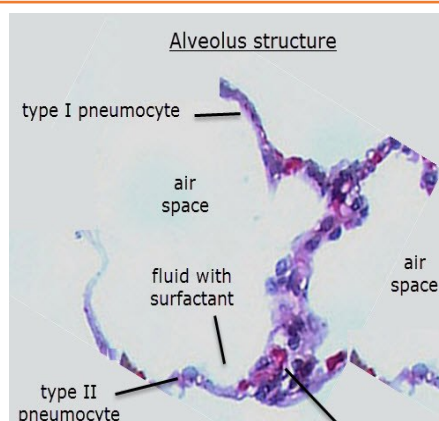
The role of the skin is _____:

Production of antibodies is by _____, Their function is to _____

Florey and Chain's experiments found _____:

Hormones and their function

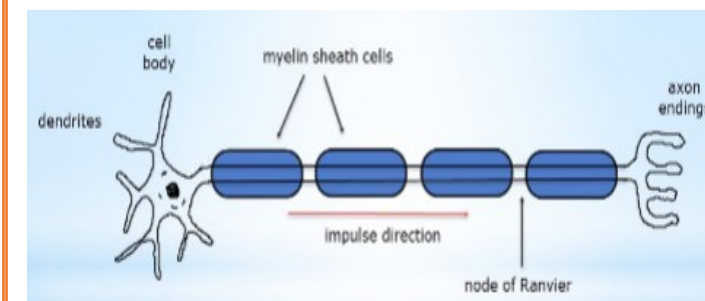
Hormone	Function
Insulin	
Glucagon	
Thyroxine	
Leptin	



Parts of the lungs which help ventilation & gas exchange

Type I pneumocytes _____
 Type II pneumocytes _____
 Trachea & Bronchi _____
 Capillaries _____
 Intercostal muscles _____
 Diaphragm & abdominal muscles _____

Annotate with details of neurones & nerve impulses



The roles of FSH, LH, estrogen and progesterone in the menstrual cycle are.

