

## Junior School

	<b>Termly fee</b>
Reception to Year 2	£3,335
Year 3 to Year 4	£4,196
Year 5 to Year 6	£5,099

Please note Pre-School fees can be found in the Summary of Fees section overleaf.

## Senior School

<b>Day fees</b>	<b>Termly fee</b>
Year 7 to Year 9	£7,041
Year 10 to Year 11	£7,304
<b>Boarding fees</b>	<b>Termly fee</b>
Year 7 to Year 9 UK/Non Visa Students <sup>1</sup>	£12,165
Year 7 to Year 9 Non-UK/Child Visa Students <sup>2</sup>	£12,512
Pre-GCSE Pathway (Year 8 to Year 9) UK/Non Visa Students <sup>1</sup>	£13,836 <sup>3</sup>
Pre-GCSE Pathway (Year 8 to Year 9) Non-UK/Child Visa Students <sup>2</sup>	£14,161 <sup>3</sup>
Year 10 to Year 11 UK/Non Visa Students <sup>1</sup>	£13,069
Year 10 to Year 11 Non-UK/Child Visa Students <sup>2</sup>	£13,415
Year 11 Pathway UK/Non Visa Students <sup>1</sup>	£15,662 <sup>4</sup>
Year 11 Pathway Non-UK/Child Visa Students <sup>2</sup>	£15,987 <sup>4</sup>

## Sixth Form

<b>Day fees</b>	<b>Termly fee</b>
Year 12 & Year 13	£7,766 (£7,304) <sup>3</sup>
<b>Boarding fees</b>	
Year 12 & Year 13 UK/Non Visa Students <sup>1</sup>	£14,601 (£13,068) <sup>3</sup>
Year 12 & Year 13 Non-UK/Child Visa Students <sup>2</sup>	£14,958 (£13,415) <sup>3</sup>

These figures above are inclusive of VAT and exclude lunch.

UK bank account holders can pay fees on a monthly basis if you wish. Many parents find it helpful to spread the cost of fees by paying 10 monthly instalments by direct debit. The Direct Debit application deadline is 30 June. You can also pay by debit card. Please contact [feesenquiries@sidcot.org.uk](mailto:feesenquiries@sidcot.org.uk)

- 1 UK/Non-Visa Students - Those students with a UK Passport (and those with settled/pre-settled status) or Students joining the school for 6 months or less.
- 2 Non-UK/Child Visa Students - Those students without a UK passport who require a Child Visa in order to study in the UK.
- 3 Loyalty Discount – Students who have taken the two year GCSE course at Sidcot will continue to pay the Year 10/11 rate if they continue their studies into the Sixth Form. Junior Pathway students will receive a £3,500 loyalty discount if they continue their studies at Sidcot after completing the full 1 year Pathway programme. This discount will be applied to the fees of the first term after completion of the course.
- 4 Cost includes a portable touch screen computer to assist with teaching and learning.

# SUMMARY OF FEES

---

## Deposit

Deposits are payable on receipt of an offer of a place to join Sidcot School, in order to secure the place. Deposits are as follows:

For Pre-School, Junior and Senior Day places: A deposit of £1000 is payable. This is non-refundable if a child leaves Sidcot School before the end of their Reception year.

For International Boarding places: A deposit of £5000 is payable to secure a place (£1000 for those staying for 1 Term).

This deposit is in addition to the termly fee and is refunded when the student finally leaves the School, once all fees and extras have been settled.

---

## Registration fee

To be considered for a place at Sidcot, a registration fee of £192 (£102 Sidcot Junior School and Pre-School) is payable to cover the administration costs of the application.

All registration fees are non-refundable.

---

## Pre-School fee

Pre-School is charged at £61.50, as follows:

08:45 -11:45: £29.00

Lunch: £3.50

12:45 -15:45: £29.00

## Junior day fee

The Junior day fee includes snacks and the majority of after school activities. Lunches are now chargeable at £225 per term. After School Care is free for the first hour up until 16:30 and £2.40 is charged per half hour from 16:30 until 18:00. Those in After School Care are welcome to have supper at a cost of £2.40 in the Refectory at 17:30. Breakfast Club provides supervision from 07:45 to 08:30 and includes a varied breakfast at a cost of £3.50.

---

## Senior day fee

The Senior day fee includes tuition and most extracurricular activities (except individual specialist tuition and certain activities). It is exclusive of lunch, which is charged at £225 per term. Students may attend supper at no additional charge.

---

## Boarding fee

The boarding fee includes everything noted under day fees, plus laundry, healthcare and most extracurricular activities (except individual specialist tuition and certain activities). It is exclusive of lunch, which is charged at £225 per term. All other meals are included in the fee.

Weekly boarding is offered subject to availability. Details are available on request.

---

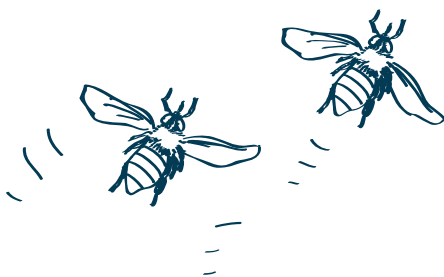
Note: fees are reviewed annually in the Spring – any changes will be featured on our website: [sidcot.org.uk/admissions/fees](http://sidcot.org.uk/admissions/fees).

Each year a voluntary £10 donation to the SCPTA (Sidcot Community Parent and Teacher Association) fund will be added to your Spring Term Extras Invoice to support the initiatives of this highly important organisation in the School.

---

## Extras

Parental permission will be sought for any trip or activity which incurs a charge of more than £20.



# ADDITIONAL FEES

---

## Specialist tuition

Sidcot School offers specialist tuition in a wide range of subjects and activities including Music, Drama, Sports and English as an Additional Language (EAL). Learning Support is available for those with a desire for booster lessons or with specific learning needs. If you would like or need specialist tuition please see the relevant Department Head to organise and book the lessons for the following term.

---

## Additional charges for individual and group lessons

For Music lessons, charges are payable in arrears. Lessons missed through school trips will, wherever possible be rescheduled. However, lessons that are missed without notification to the relevant member of staff or due to pupil sickness or non receipt of payment will not be rescheduled. A four-week notice of cessation is required in writing to the Director of Music, Sidcot School, Oakridge Lane, Winscombe, North Somerset, BS25 1PD.

The hourly rate for all individual lessons is £48.30, including EAL and Learning Support. The hourly rate for group lessons is £27.30.

## Flexi boarding

Recognising the changing needs of families, our approach to boarding is flexible. As well as full boarding, options for both weekly and flexi boarding may be available.

Whilst the majority of our boarders are full time, we are happy to discuss other options to meet particular needs.

The cost of flexi boarding is £55 per night.

---

## Examination charges

Examination Board charges and any access administration charges for external exams (GCSEs, etc.) which are incurred by the School, are charged to parents. They are billed in advance or in arrears, depending on the exam. For those taking IB, the examination charge is approximately £750. University application fees are also passed on to parents through our billing system, if the student/parent does not pay for their application directly.

---

## School Bank details

The School will let you know in writing if they are going to change their bank details. To avoid the potential of fraudulent activity, if you do receive such a notification, please ensure that you check the details against those held on the parent portal.



# CONDITIONS AND PAYMENT ARRANGEMENTS

---

## Sibling discounts

A 10% discount is given to children who already have one sibling at the School and will be deducted from the lowest fee at that time.

---

## Early Years funding

Sidcot accepts Local Authority Early Years Funding up to a total of 15 hours of subsidised education per week. This is available from the term after the child's third birthday.

---

## Guardians

It is a condition of entry that all students from overseas have a mature and responsible UK guardian. This may be a friend or relative in the UK over the age of 25 or a specialist guardian agency that will charge appropriate fees. Please refer to our Guardian Policy available on our website.



## Summary of fee arrangements

The annual fee is split into three equal payments which are payable one month in advance of the first day of each term.

A full term's notice in writing, or a term's payment in lieu, is required before removal of a student other than at the end of the Upper Sixth Form year. No reduction in fees can be made for absence due to illness, however, insurance is available for parents who wish to protect themselves against this eventuality.

In accepting a place at the School, the parent or guardian accepts responsibility for the payment of school fees for the entire period during which the student remains at the School, unless this responsibility is accepted by another party in writing. Interest or a charge for debt collection may be added to overdue accounts.

For those wishing to pay fees by direct debit, payments would start on 1 August and continue on the first of each month until 1 May. Extras are invoiced separately from the direct debit arrangement and are payable in full. If you are interested in paying by direct debit, please email [feesenquiries@sidcot.org.uk](mailto:feesenquiries@sidcot.org.uk) or write to the school address before 30 June.

